

**OBSTRAUP**

**E**

# **OPERATION MANUAL OBSTRAUPE 05 AND 05+**

**A FRUIT HARVESTER  
BY ORGANIC TOOLS GMBH**

**Version 2.0 (11.9.2024)**

# OPERATING INSTRUCTIONS FOR OBSTRAUPE 05 AND 05+

1	—————	<b>WARNINGS AND NOTES</b>	<b>3</b>
		<b>IMPORTANT SAFETY INSTRUCTIONS / WARNINGS</b>	<b>3</b>
		<b>EXPLANATION OF SYMBOLS</b>	<b>3</b>
		<b>TYPE PLATE</b>	<b>5</b>
		<b>IMPORTANT OPERATING INSTRUCTIONS</b>	<b>5</b>
2	—————	<b>GENERAL VIEW</b>	<b>7</b>
3	—————	<b>DESCRIPTION, OVERVIEW</b>	<b>8</b>
		- FUNCTION	8
		- TECHNICAL DATA	8
4	—————	<b>COMMISSIONING</b>	<b>9</b>
		- SCOPE OF DELIVERY	9
		- UNPACKING	9
		- MOUNTING THE WHEELS	10
		- MOUNTING THE LEAF BRUSH	11
5	—————	<b>COMMISSIONING THE OBSTRAUPE 05</b>	<b>12</b>
		- CORDLESS DRILLER ASSEMBLY	12
		- BATTERY STORAGE	15
6	—————	<b>COMMISSIONING THE OBSTRAUPE 05+</b>	<b>16</b>
		- INSERT THE BATTERY	16
		- SPEED ADJUSTMENT	18
		- BATTERY MANAGEMENT	19
7	—————	<b>OPERATION</b>	<b>20</b>
		- ADJUSTMENT OF THE HANDLEBAR	20
		- FRUIT HARVESTING	21
		- INSERT FRUIT CRATES	21
		- OPERATING TIPS	23
		- UTILIZATION OF THE OBSTRAUPE	23
8	—————	<b>POST-WORK</b>	<b>24</b>
		- CLEANING	24
		<b>MAINTENANCE AND STORAGE</b>	<b>25</b>
		<b>BALL BEARING MAINTENANCE</b>	<b>26</b>
		<b>LAMELLA REPLACEMENT</b>	<b>28</b>
		- DISPOSAL	29
9	—————	<b>DECLARATION OF CE CONFORMITY</b>	<b>29</b>
10	—————	<b>WARRANTY AND GUARANTEE CONDITIONS</b>	<b>30</b>

# 1 – WARNINGS AND NOTES

## IMPORTANT SAFETY INSTRUCTIONS / WARNINGS

Thoroughly read the manual for the handheld fruit harvesting device "OBSTRAUPE" before use. Familiarize yourself with your OBSTRAUPE before each use. The operator must comprehend all safety and warning instructions, the operating manual, and maintenance and storage information prior to using the device. Improper operation and maintenance of the OBSTRAUPE may lead to injuries to the operator or bystanders. Store this manual securely for constant access. When lending the device to another individual, provide them with this operating manual and safety instructions.

The warnings, hazard notices, and instructions in this operating manual cannot address all potential conditions or situations. The operator should recognize that common sense and caution are essential elements that cannot be incorporated into the product but must be upheld by the operator.

## EXPLANATION OF SYMBOLS

The symbols and signal words utilized in this manual or on the product are as follows:



### Warning!

–

Signifies a hazard with a low risk level that, if not mitigated, could lead to minor or moderate harm.



### NOTIFICATION

–

Warns of potential property damage or offers valuable supplementary information for assembly or operation.



## DECLARATION OF CONFORMITY

Products bearing this symbol comply with all relevant EU community regulations (refer to the "CE Conformity Declaration" section).



## WARNING OF HOT MOTOR SURFACE (OR 05+ ONLY)

This symbol indicates the risk of injury when touching the motor if it has become hot during operation.



## ROLLER MOVEMENT ALERT

This symbol denotes hazards resulting from the operation of the collecting roller on the device.



## MOVING ROLLER

This symbol denotes potential hazards resulting from the collection roller starting when the operating lever is activated.



## ABSENCE OF A HIGH-PRESSURE CLEANER (OR 05+ ONLY)

This symbol signifies that high-pressure cleaners should not be used for cleaning the device.



## OIL HOLE

This symbol denotes the oil hole for lubricating the drive chain.



## MANUFACTURED IN AUSTRIA

This symbol signifies that most OBSTRAUPE 05 and 05+ products are designed, produced, assembled, and distributed in Austria.

## TYPE PLATE



The nameplate displays the following details:

Distributor's full address Machine name Device type or series Serial number Technical specifications: voltage and power Manufacture year CE marking

## IMPORTANT OPERATING INSTRUCTIONS



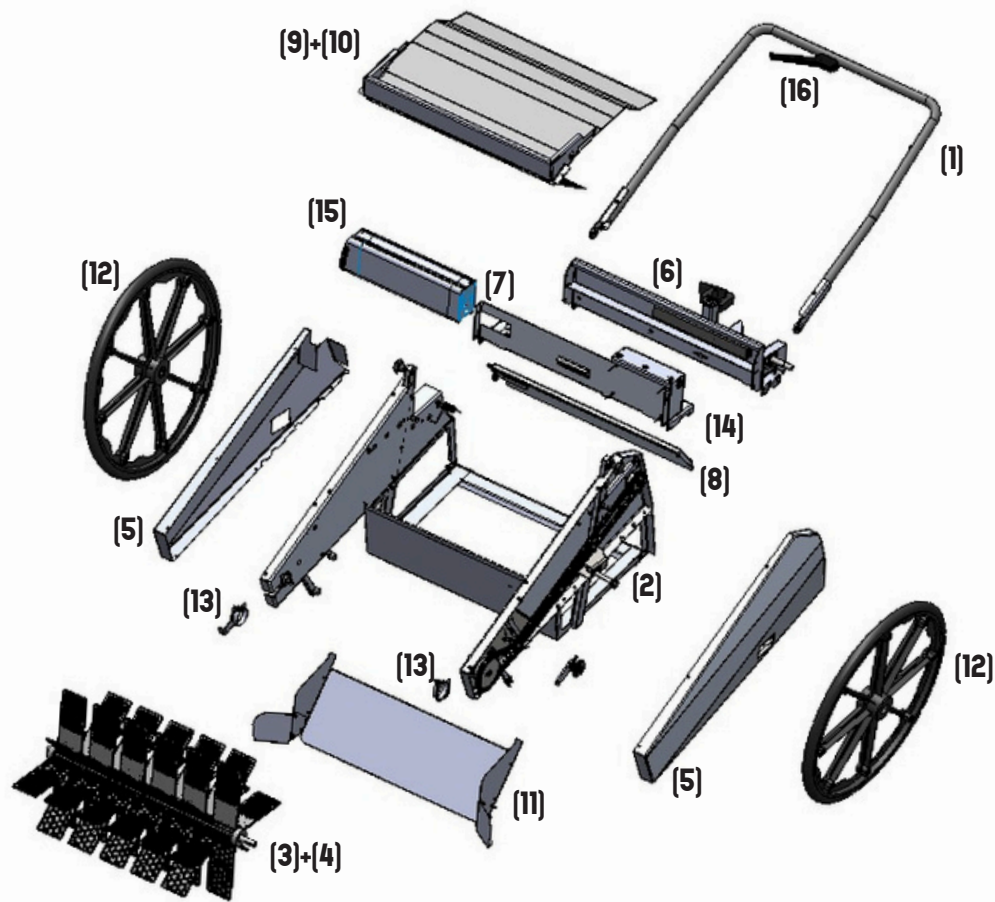
### WARNING! –

Risk for children and individuals with diminished physical, sensory, or cognitive abilities.

- 1 — Adhere to local regulations concerning the operator's minimum age. The device should not be used by children or individuals unfamiliar with the operating instructions.
- 2 — The OBSTRAUPE is suitable for children aged 10 years and older, as well as individuals with physical, sensory, or mental limitations, or those lacking experience and knowledge, provided they are supervised or have received proper instructions on safe usage and comprehend the associated risks.
- 3 — Avoid using the fruit harvesting tool as a plaything.
- 4 — Operating the device under the influence of alcohol, drugs, or medication is prohibited.
- 5 — Do not leave the device unattended when it is operational (if needed, remove the battery key).
- 6 — Operate the device independently and be mindful of bystanders.
- 7 — Eye protection and appropriate work attire should always be worn when using the equipment.

- 8** ——— Avoid placing the fruit harvester in close proximity to a fire, as the battery, fins, and tires are highly flammable. Exercise caution when operating it on uneven ground, near ditches, or on slopes to prevent tipping.
- 9** ——— When operating on inclines: - Always secure your footing - Ideally work horizontally across the incline - Avoid working on slopes with a steep gradient for safety purposes exceeding 50%
- 10** ——— Operate solely in the presence of adequate natural or artificial illumination.
- 11** ——— Keep body, limbs, and clothing clear of rotating and moving parts.
- 12** ——— No transportation of individuals on the apparatus.
- 13** ——— Do not exceed a 20 kg load capacity with the device.
- 14** ——— When harvesting fruit by the roadside, be mindful of passing vehicles.
- 15** ——— Always inspect the fruit harvester before usage to verify its operational status.
- 16** ——— Examine nuts, bolts, screws, and rivets and tighten as needed to guarantee safe operation of the equipment.
- 17** ——— The device requires inspection for damage following impact by a foreign object.
- 18** ——— Promptly substitute or repair any damaged or worn components prior to utilizing the device.
- 19** ——— Operate the device only with all protective devices fully installed and undamaged (e.g. tailgate closed).
- 20** ——— The drive lever should not be secured.
- 21** ——— Never attach the fruit harvester to a motorized vehicle.
- 22** ——— Prior to utilizing the device, thoroughly inspect the terrain and eliminate any foreign objects (such as branches, stones, etc.).

## 2 – GENERAL VIEW



- |                                  |  |
|----------------------------------|--|
| (1) HANDLEBAR                    | (9) STORAGE BOX  |
| (2) BASE FRAME                   | (10) ...WITH LEAF BRUSH                                  |
| (3) PICK-UP ROLLER               | (11) PICK-UP GUIDING PLATE                               |
| (4) ...WITH 44 PICK UP FINS      | (12) WHEELS  |
| (5) FLAT SIDE COVER              | (13) FLANGE BEARING WITH ANTITANGLE PROTECTION           |
| (6) DRIVE MODULE (OBSTRAUPE 05)  | (14) CONTROLLER COVER INCL. POTENTIOMETER (FOR 05+ ONLY) |
| (7) DRIVE MODULE (OBSTRAUPE 05+) | (15) E-BIKE BATTER (ONLY 05+)                            |
| (8) TAILGATE                     | (16) DRIVE LEVER   |

# 3 – DESCRIPTION, OVERVIEW

## FUNCTION

The OBSTRAUPE 05 / 05+ serves as a fruit harvesting tool designed to gently and efficiently collect fruits and nuts (e.g. apples, pears, walnuts) from the ground into a replaceable container, streamlining the gathering of premium processing fruits.

The fruit harvester is equipped with two 24" plastic solid rubber wheels (12). It utilizes a pick-up roller (3) with 44 plastic fins (4) to gather objects from the ground and guide them to the rear through a guiding plate (11) into a replaceable collection container. Operated manually via a handlebar (1), the fruit harvester features a drive lever (16) mounted on the handle. In the case of the OBSTRAUPE 05, the lever activates a switch on the cordless drill through a Bowden cable attached to the drive shaft with an adjustable bracket. (6) In contrast, the OBSTRAUPE 05+ model's drive lever regulates an electric motor via a controller powered by a battery (15), which propels the pick-up roller (3). A tailgate at the rear of the device (8) prevent items from spilling out. The tilted wheel position, combined with deflectors on the receiving grate, helps prevent accidental damage to fruit. The handlebar's height can be adjusted using a star grip and toothed discs on the frame's sides, and it can be folded for easy transport and storage. The fruit harvester includes a central crate storage (9) for transporting up to three empty crates (or more foldable crates). This storage can be opened upwards for convenient cleaning. Additionally, a leaf brush (10) can be attached to the crate storage (9) to reduce contamination with leaves or grass.

## TECHNICAL DATA

<b>Dimensions</b>	Dimensions: 125 cm x 84 cm x 112 cm / 49.21 in x 33.07 in x 44.09 in
<b>Working Width</b>	74 cm / 29.13 in
<b>Empty weight</b>	29 kg / 63.9 lbs
<b>Operating weight</b>	30–33 kg / 66–73 lbs including battery and box
<b>Fruit box</b>	Volume: 34 liters / 8.9 gal
<b>Harvesting capacity</b>	Capacity: Up to 1 ton per hour
<b>Wheels</b>	24-inch plastic rims with PU solid rubber tires
<b>Device type</b>	hand-held
<b>Drive 05</b>	Power drill / drill
<b>Drive 05+</b>	Electric brushless 400W gear motor powered by a 48V battery.
<b>Varieties of fruit</b>	Suitable for harvesting apples, pears, walnuts, chestnuts, hazelnuts, apricots, and plums.



# 4 – COMMISSIONING

## SCOPE OF DELIVERY

The fruit harvester arrives pre-assembled. Prior to assembly, please review the operational and safety guidelines in the instruction manual. Neglecting to adhere to these guidelines could lead to damage to property or harm to the operator or onlookers.

- A** Primary component for fruit harvester (pre-assembled)
- B** Wheels (12) (2x)
- C** Gathering fins (4) with spacers (44x pre-assembled, 2x reserve)
- D** Leaf brush (10) (1x)  
For wheel assembly: Hexagon screw (2x) / Snap ring (2x) / Hub cap (2x) / Washer (4x) – all M12
- F** For brush assembly: Gate hinge screw (2x) / Washer PA (2x) / Wing nut (2x)
- G** Solely for fruit harvester 05+: E-bike battery with key

## Unpack

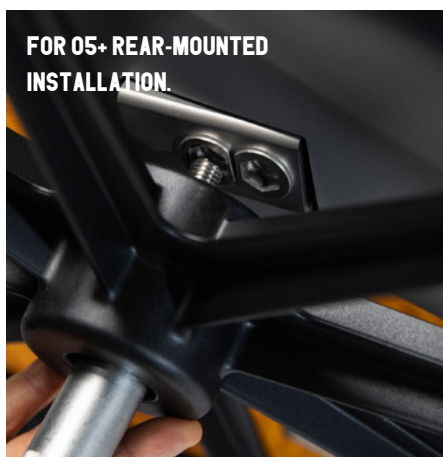
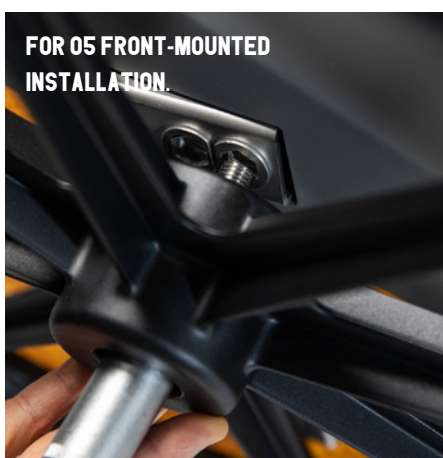
Open the shipping box and remove the OBSTRAUPE from it with the assistance of two individuals.



## MOUNTING THE WHEELS

### ASSEMBLY KIT F:

- 2 x wheel bolts
- 2 x snap rings
- 4 x washers
- 2 x wheel caps



1. Slide the snap ring onto the wheel bolt.
2. Mounting a slide disc onto a wheel bolt.
3. Insert the wheel bolt through the wheel bearing externally. Internally, the wheel aligns with the ball bearing.
4. Slide on the second mounting disk.
5. Fruit Crawler 05: Install the wheel in the front position. Fruit Crawler 05+: Install the wheel in the rear position.
6. Secure the wheel tightly using a 19mm wrench.
7. Attach the cover cap to the wheel.
8. Repeat the procedure on the opposite side.



### IMPORTANT!

—  
Regularly inspect the wheel bolts to ensure they are securely fastened.

## MOUNTING THE LEAF BRUSH

The provided leaf brush (10) is not included as a standard feature. It is utilized for preliminary cleaning (leaves, grass residues), particularly for nuts or late pear varieties, when sorting solely with the sorting table\* is inadequate.

The Sorting table is a great addition for the OBSTRAUPE harvester and is available for purchase on our website.

### Assembly Kit G:

2 x hinge screws M5

2 x plastic washers

2 x wing nuts M5.



1. Access the container storage (9).
2. Attach the foliage brush (10) to the front of the container bearing, as depicted in the image below.



3. To accomplish this, push the hinge screws outward from the inside. Position the square apertures on the front of the container. Place the leaf brush followed by a washer. Secure all components using a wing nut.

# COMMISSIONING THE OBSTRAUPE 05



## IMPORTANT!

—  
A video on the assembly of a cordless drill can be accessed here: <https://encr.pw/dlad3>.

## CORDLESS DRILL ASSEMBLY

1. Initially, attach the cordless drill to the drive shaft.



2. Secure the drill chuck firmly.





3. Reposition the rubber clamp securing the cordless drill shaft by loosening the TORX screw (TX30) and opening the lower back screw with an 8mm wrench or socket.



4. The rubber clamp's height can be readily adjusted by shifting it.



5. The cordless drill can now be attached using the rubber clamp.



6. The operating lever now requires adjustment to be positioned near the center of the cordless drill actuator.



7. To shift the complete unit of the operating lever horizontally, loosen the screw depicted in the photo. Subsequently, you can adjust the lever towards the actuator of the cordless drill. Additionally, the adjusting screw at the extremity of the Bowden cable is provided for precise calibration.



8. The rail's height can be adjusted to move the actuator lever vertically. Open the screws on the left and right of the rail, along with the TX30 screw behind the cordless drill shaft. This adjustment allows the actuator unit and rail to be raised or lowered, ensuring the lever aligns with the cordless drill's power switch.



9. Finally, the cordless drill should be secured at the back with a small screw featuring a black rubber cap. Simply unscrew the screw until it makes contact with the cordless drill.



### **BATTERY STORAGE**

Additional batteries can be carried in the compartment adjacent to the cordless drill.

# COMMISSIONING THE OBSTRAUPE 05+



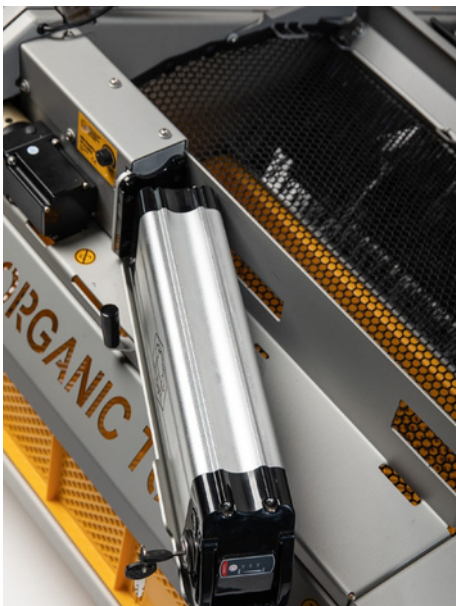
## WARNING! –

If the electric motor is exposed to extended periods of heavy load, its temperature could rise.

## INSERT THE BATTERY



1. To detach the battery, switch the ignition key to the "OFF" position. Next, shift the battery lever to the right.



2. The battery can now be repositioned rearward.





3. The key must be set to "UNLOCK" now.



4. The battery can be removed from the rail using the handle.

5. During installation, ensure that the key is initially positioned at "UNLOCK" and that the battery is fully inserted onto the rail.
6. Before swinging the battery inward, ensure the key is turned to the "OFF" position, but refrain from switching it to "ON" at this point.
7. The battery should only be activated after it has been fully secured in place using the battery lever.



8. To assess the battery level, press the small button located on the front panel exterior near the ignition lock while the battery is activated. The initial indicator light is red, while the subsequent two are green.



#### **IMPORTANT!**

Always ensure the key is set to "OFF" when the device is not in use to prevent the motor electronics from consuming unnecessary energy and diminishing battery performance.

### **SPEED ADJUSTMENT**

The collecting roller's speed can be adjusted continuously via a potentiometer on the controller housing cover. Adapt the speed range of the fruit harvester to the specific conditions before or during operation. The denser the ground covering or the larger and heavier the fruit to be harvested, the greater the required speed.



# BATTERY MANAGEMENT

## Battery charging

The battery can be charged on the device or separately. The battery charging socket is situated opposite the ignition lock. For separate charging, refer to the section "Inserting/removing and using the battery".

Charger charging indicators:

1. LED display inactive = battery disconnected from charger LED display on charger RED = battery charging LED display on charger GREEN = battery fully charged or charger not connected to power supply



### IMPORTANT!

To maintain the battery's longevity, it is essential to charge it every 2-3 months, even when not in use during the harvest season.



### IMPORTANT!

After using the fruit harvester, it is crucial to turn off the battery by switching the key to the "OFF" position to prevent self-discharge when left in the "ON" position.

## Warnings



### IMPORTANT!

- Avoid charging or using the battery in high temperatures. Refrain from short-circuiting the positive (+) and negative (-) terminals of the battery.
- Avoid submerging the battery in water or acidic fluids. Ensure it remains dry.
- The battery ought to be stored in clean, dry conditions.
- Only charge the battery using the provided charger.
- Keep the battery away from fire sources.
- Refrain from disassembling or deforming the battery.
- Minimize exposure to excessive physical shock or vibration.
- Charge the battery pack at least once every 3 months.

# 7 – OPERATION

## ADJUSTMENT OF THE HANDLEBAR

1. To adjust the handlebar, rotate the star grip on each side until the toothed discs are no longer engaged.

Adjust the grip (1) to ensure the operating lever (16) is at an ergonomic working level. Optimal collection is achieved when the grip is set at hip level. When transporting, the grip can be shifted forward into the transport stance.



2. Tighten the star grips to fix the handlebar. Ensure that the toothed discs fully engage on both sides.



## FRUIT HARVESTING



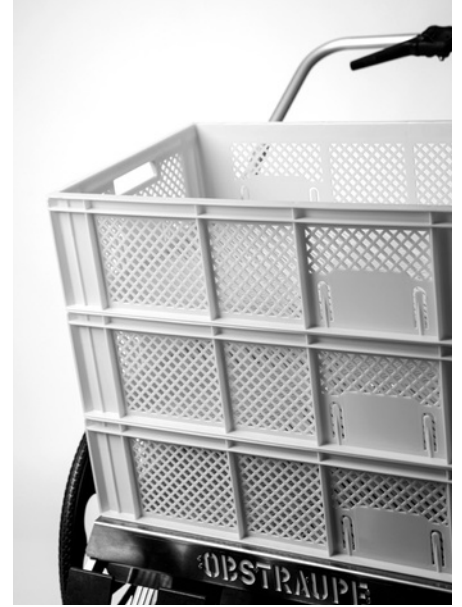
The drive lever (16), mounted on the handle (1), initiates motion in the collecting roller (3) of the fruit harvester to gather fruit.

## INSERT FRUIT CRATES

1. To replace the collection container, begin by opening the tailgate (8) using the foot symbol located on the right side of the tailgate.
2. The rear door (8) opens. Tilt the device downward until the box frame touches the ground, then push the device forward. The collection container slides out of the box frame.
- 3.



4. After emptying the box, reinsert the empty collection container.
5. To close the tailgate (8), press the foot symbol with your foot until it clicks into place.
6. The box storage (9) on top of the device is for transporting more empty boxes, accommodating up to 3 additional collection containers.



## OPERATING TIPS



**Grass Length:** For optimal efficiency, it is advisable to operate the device on grass up to a length of 15cm/ 6 inches.



**Rotation speed:** Avoid setting the speed higher than required to prevent fruit damage and optimize operational efficiency.



**When harvesting,** it is advisable to start from the outer edges and move inward to prevent running over the fruit. It also helps to make a track to the tree trunk and harvest from the centre of the tree in a spiral outwards.



**Harvesting backwards:** Small fruits up to approximately 5 cm (2 in) in diameter and nuts are best collected by reversing using the rotating collecting roller (3). Larger fruits should be harvested in a forward motion to prevent injuries from the receiving grate (11).



**Leverage the forward propulsion:** The collection grid (11) should glide slightly above the surface for an energy-efficient harvest. This equilibrium is most effective when the pickup roller (3) is in motion, allowing for automatic adjustment of the working position. The rotation of the pickup roller (3) facilitates smooth forward movement during harvesting. If the device's collection performance is subpar, consider applying more pressure to the pickup roller (3) against the ground or raising it further above the surface. The roller's "contact pressure" plays a vital role in its performance.

## MORE DRIVING TIPS?

This QR code directs to a video demonstration of the application. Also check out our Social Media channels.



<http://y2u.be/sOYqnXDjLh4>

## 8 – AFTER WORK

### ANTI-TANGLING BLADE



The grass wrap guard (13) is mounted on both sides of the collecting roller and ensures that no grass wraps itself in the flange bearing due to the rotating roller. A small blade made of spring steel grinds over a black plastic disk and cuts off wrapped grass blades. The blade can be readjusted via a slotted hole. Check both grass wrap guards regularly and remove any wrapped plant residue.

### CLEANING



Clean the collecting fins (4), the receiving grid (11) and the collecting containers immediately after use with water and a sponge/brush to prevent any fruit residue and dirt from drying out. You can use a garden hose for these areas, for example.



#### IMPORTANT !

–

Do not clean the device with a high-pressure cleaner, as there is a risk of damaging the motor, the controller and the bearings of the collecting roller (3). Even when cleaning with a garden hose, make sure that the motor is not sprayed directly!



# MAINTENANCE AND STORAGE



## Maintenance Work Position

To inspect and upkeep the fastening components of the fruit harvester near the collection roller (3), it is advisable to position the device as depicted in the image.



## Storage of the fruit harvester during the off-season.

1. Always store the empty fruit harvester.
2. For delicate storage year-round  
It is advisable to position the fruit harvester over a collection container. Utilize an empty collection container and position it inverted. Situate the device in a way that the collection fins Do not place on the floor. The box functions as a storage space for the device and aids in safeguarding the collection fins in the long run.



### IMPORTANT!

To guarantee optimal long-term performance, ensure the cleanliness and dryness of the fruit harvester. Store the device in a manner that shields it from moisture, light, heat, and frost. Always check that the fins remain unbent during storage to prevent potential permanent deformation.



## Storage of the fruit harvester out of season

1. Always store the fruit harvester empty.
2. For gentle storage during and out of season we recommend placing the fruit picker on a collecting container. Use an empty collecting container and place it upside down. Place the device so that the collecting fins (4) do not rest on the floor. The box serves as a storage area for the device and helps to protect the collecting fins (4) in the long term.



### IMPORTANT!

–

To ensure satisfactory operation over the years, make sure that the fruit harvester is clean and dry. The device should also be stored as protected as possible from moisture, light, heat and frost. Always ensure that the fins are not bent when storing the fruit harvester! Otherwise, permanent deformation could occur.

## Regular maintenance

– Remove the receiving container and clean it of dirt. – Clean the collecting fins (4) and the receiving grate (11). – Regularly check all fastening parts for tightness.

## End of season maintenance

– Apply a few drops of multi-purpose oil to the bearing (13) of the collecting roller (3) and the joints of the drive lever (16). – Clean and lightly grease all moving parts every year. – Remove the wheels (12) every two years and replace the bearings.

clean.



### NOTE!

–

If a part needs to be replaced, use only parts that meet the manufacturer's specifications. Replacement parts that do not meet the specifications may endanger safety or adversely affect operation.



## MAINTENANCE OF THE FLANGE BEARING

The flange bearings (13) of the collecting roller are mounted on both sides of the machine inside the side panels. Despite the grass wrapping protection, the bearings can become contaminated. This can impair the function of the machine.

It is therefore important that you regularly maintain the bearing. To do this, remove it completely, remove any dirt, clean any rust and oil it with a few drops of multi-purpose oil. Check the two plastic discs for serious signs of wear. If the bearing or discs need to be replaced, contact us; the spare parts are also available from our online shop.

If a part needs to be replaced, use only parts that meet the manufacturer's specifications. Replacement parts that do not meet the specifications may endanger safety or adversely affect operation. For maintenance, open both side covers. To do this, the wheels must be removed first. The side covers can now be unscrewed.



### ATTENTION !

–

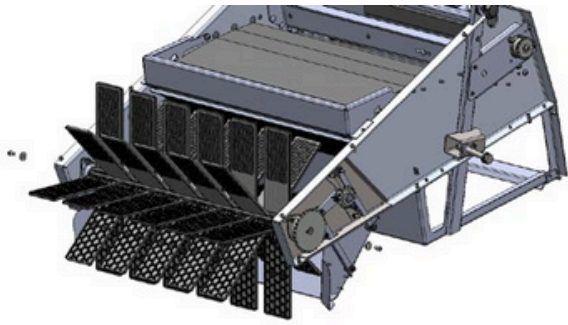
Only open the side cover screws by hand, not with a cordless drill. Since the threads are made of stainless steel, they can easily become rubbed and thus cause damage. It is very important, especially when reassembling at the end of maintenance, that the side cover screws are lubricated with a drop of oil or some grease before assembly and carefully screwed into the threads by hand!



### ATTENTION !

–

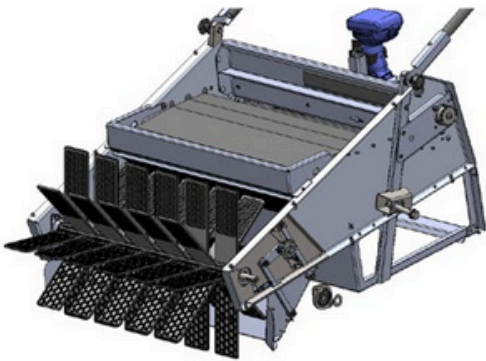
Be sure to remove the battery from your machine before opening the side covers!



**1.**  
To begin with, open the screws at both ends of the collecting roller. Since these are secured with a screw adhesive, a certain amount of torque may be required. If the screws cannot be opened, heat them up with a hair dryer, for example, and the adhesive should then lose its effect.



**2.**  
Now remove the chain and the sprocket. The chain can remain attached to the other two sprockets.



**3.**  
After opening the nuts, the flange bearings can be pulled off the shaft. Please make sure not to lose the spacers in front of and behind the bearings and to position them correctly when reassembling!

You can now lift the collecting roller out of the machine and clean the bearings and the grass wrap guards. To reassemble, proceed in reverse order. First clean the two locking screws on the collecting roller (Figure 1) and then glue them in place using medium-strength thread adhesive. When assembling the side covers as described above, grease the screws before inserting them and only screw them in by hand to avoid rubbing the threads.

## CHANGING FINS

If you need to replace one or more of the plastic fins, this is easy to do. You received two spare fins with the device. If you need more fins, you can purchase them from our online shop.

First, dismantle the collecting roller as described in the previous chapter.

When removing the roller, make sure that no spacers are lost and that the discs are reassembled in the correct order at the end.

You can now pull the damaged fins out of the corrugated profile and replace them with new fins.

When assembling, please pay attention to the points described in the previous chapter.



### NOTE !

–

Always pay attention to the orientation and positioning of the fins: –  
The smooth side of the fins must always touch the collected material. –  
A fin and a spacer must always be inserted alternately into the  
grooves are inserted.

– The rows start alternately with two spacers in a row  
or a fin, so that the fins are always offset from row to row.

– This means that in the rows that start with one fin, 6 fins must be  
mounted at the end, while in those rows that start with two  
spacers, only 5 fins are positioned.

## DISPOSAL



**Old devices should not be discarded in household waste.**



**Batteries and rechargeable batteries should not be disposed of as household waste.**

Dispose of packaging separately by placing cardboard and cartons in the waste paper bin and foil in the recycling bin.

Dispose of outdated appliances separately from household waste, for instance, at a designated collection point in your local community or district (relevant in the European Union and other European countries with established systems for segregating recyclable materials).

If you no longer utilize the fruit harvester, you have the option to privately sell it as secondhand goods. Furthermore, each consumer is legally required to properly dispose of old devices apart from household waste, for instance, at a designated collection point in their local area.

Consumers are required by law to return all batteries and rechargeable batteries, whether or not they contain hazardous substances, to a designated collection point in their community/district or to a retailer for environmentally friendly recycling.

## 9 – EC

Our company

Organic Tools GmbH  
Arnethgasse 42/11 A-  
1160 Wien.

We, hereby declare our product OBSTRAUPE 05 and OBSTRAUPE 05+

Complies with all pertinent provisions of the Machinery Directive 2006/42/EC.

Valid signature

Three handwritten signatures in black ink, corresponding to the names listed below.

David Brunmayr, Lukas Griesbacher, and Stefan Bermadinger serve as Managing Directors at Organic Tools GmbH.



ORGANIC TOOLS GMBH  
ARNETHGASSE 42/11, A-1160 WIEN  
+43/0/670 404 707 4, INFO@ORGANIC-TOOLS.COM  
WWW.ORGANIC-TOOLS.COM  
UID: ATU73026619, FN: 486700 K

# 10 – WARRANTY AND GUARANTEE TERMS



## Greetings!

Unauthorized alterations and fixes not outlined in this manual will nullify the warranty.

## Warranty

2 years from the invoice date  
1 year on the Li-ion battery

## Guarantee

The extended guarantee period for the frame is 5 years from the invoice date. Register on our website within 3 months of the invoice date at: [www.organic-tools.com/erweitertegarantie](http://www.organic-tools.com/erweitertegarantie)

Expenses: Complimentary repair or replacement as necessary within the warranty or guarantee. The buyer is responsible for transportation costs to the repair facility.



## Greetings!

Prior to dispatching your device, kindly reach out to us via phone or email. Based on the issue, a service representative may visit your location or a resolution may be identified through a nearby workshop.

## Exclusion of warranty and guarantee terms

This excludes damage resulting from:

Accidents or unforeseen events (e.g. lightning, water, fire) – Improper use or transport – Disregard of safety and maintenance regulations – Other improper processing or modifications – Visual defects such as rust, white spots on the aluminum, etc.

## Post-warranty repairs

Once the warranty period has lapsed, you may choose to have repairs conducted at the service center for a fee. If the repair or cost estimate is chargeable, you will receive prior notification.

In countries where a mandatory guarantee, spare parts inventory, or compensation arrangement is required by law, the minimum legal requirements apply.





# ON BEHALF OF NATURE



David Brunmayr  
Co-Founder  
[david@organic-tools.com](mailto:david@organic-tools.com)

Stefan Bermadinger  
Co-Founder  
[stefan@organic-tools.com](mailto:stefan@organic-tools.com)

Lukas Griesbacher  
Co-Founder  
[lukas@organic-tools.com](mailto:lukas@organic-tools.com)

**ORGANIC TOOLS GMBH**

**WWW.ORGANIC-TOOLS.COM**

**ARNETHGASSE 42/11**

**A-1160 VIENNA**

**+43 0 670 404 707 4**

**INFO@ORGANIC-TOOLS.COM**



